



s o r c e r e r

sor·cer·er /'sôrsərər/ Noun. A person who has magic powers; a wizard.



sorcrr

Sorcrr's unique spelling is a portmanteau of **source** + **sorcerer**— and comes from the playfulness of the child in each of us; a child who tenaciously persists in the quest to figure it out. Hoping with a naive faith only capable of one driven by the [almost imperceptible] ripples of potential that *might* manifest a chance to fulfil their ultimate dream to be a successful artist. And an overwhelming belief that their drive is somehow influencing the *universal* source—and—that it is responding with somebody—or *something*—[perhaps a *SORCERER?!!*] + [somewhere] who is listening & preparing for just the right moment to grant us our deepest desires.

ask.

receive.

BECOME!



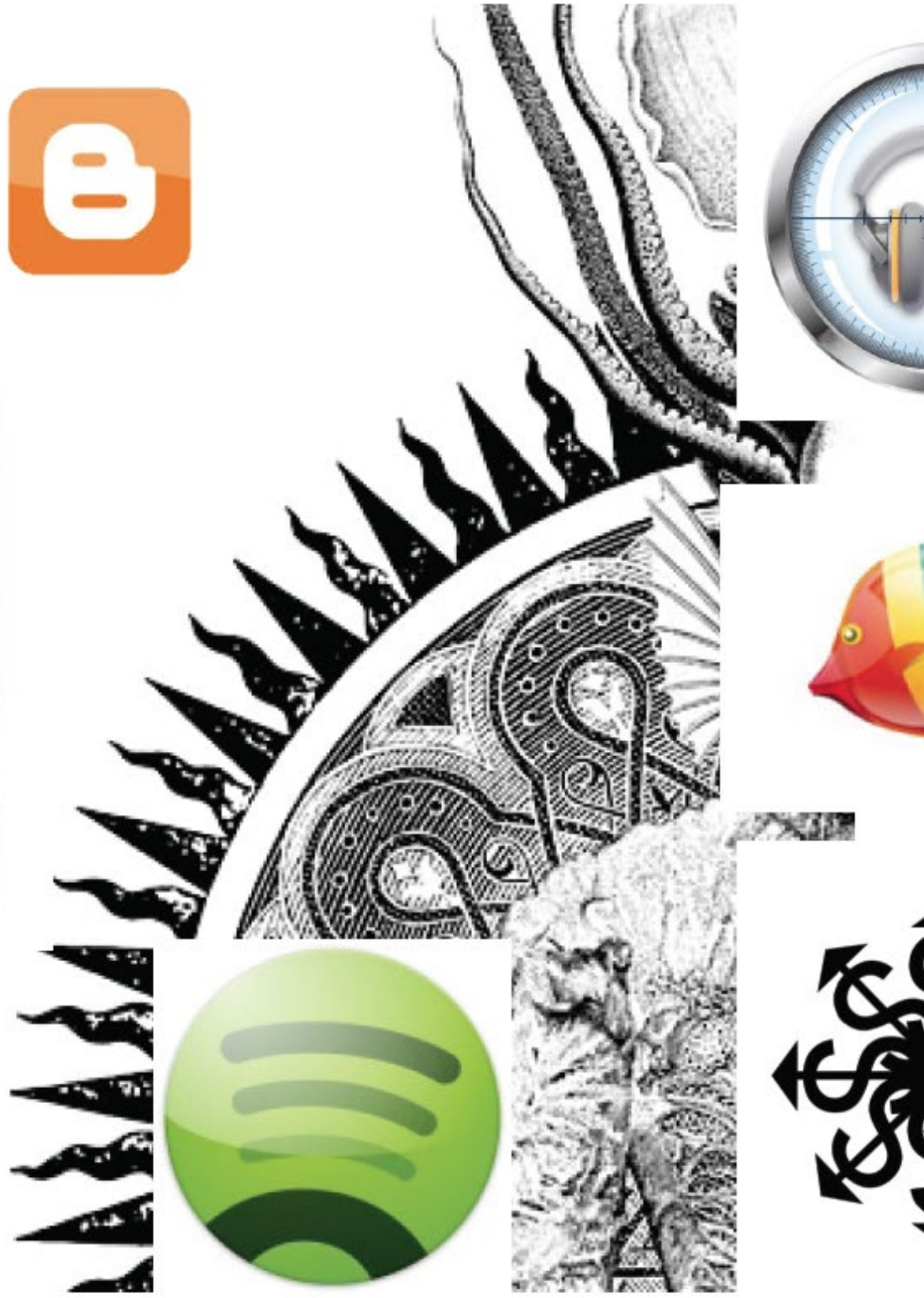


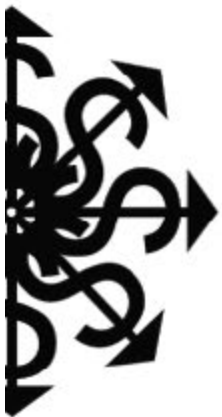
source /sôrs/ Noun. A place, person, or thing from which something comes or can be obtained. Verb. Obtain from a particular source: “each type of coffee is sourced from one country”.

Synonyms: origin - spring - well - fountain - fount - root

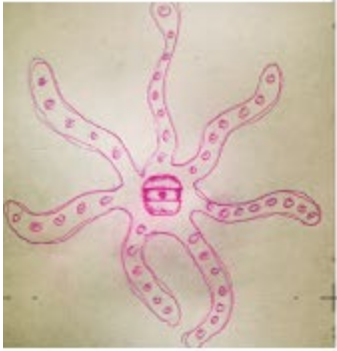


eminent:Logo





INFLUENCE



S

e

l

f

o

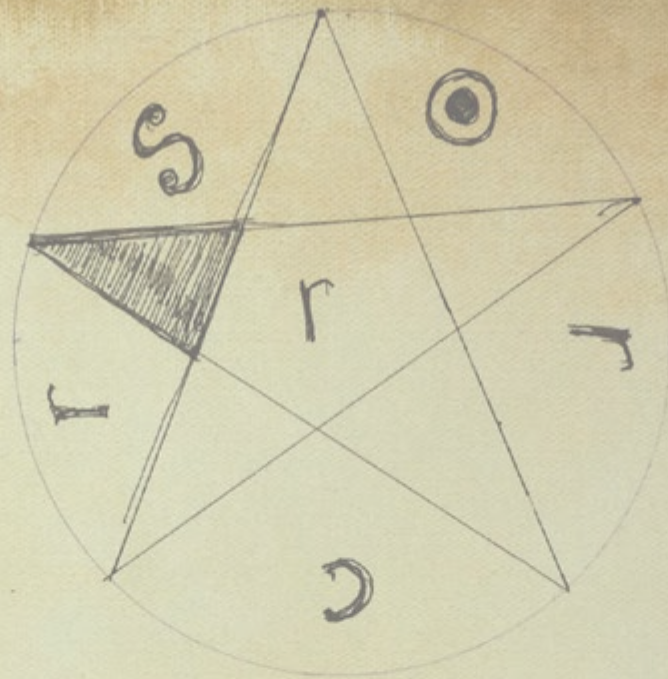
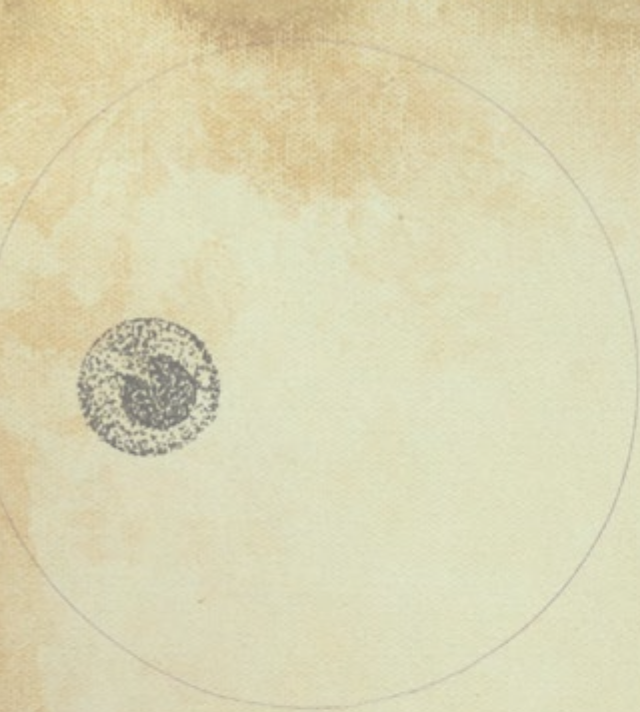
r

io



g a n i z i n g





sketchwork

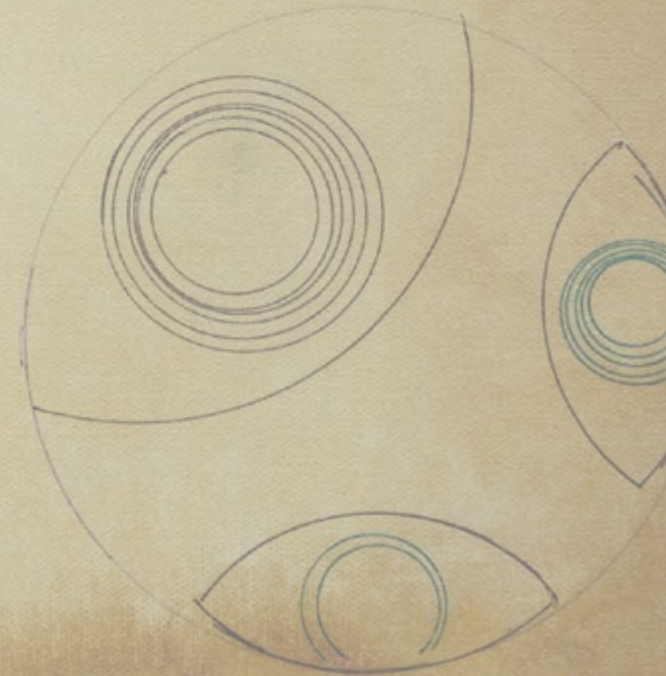
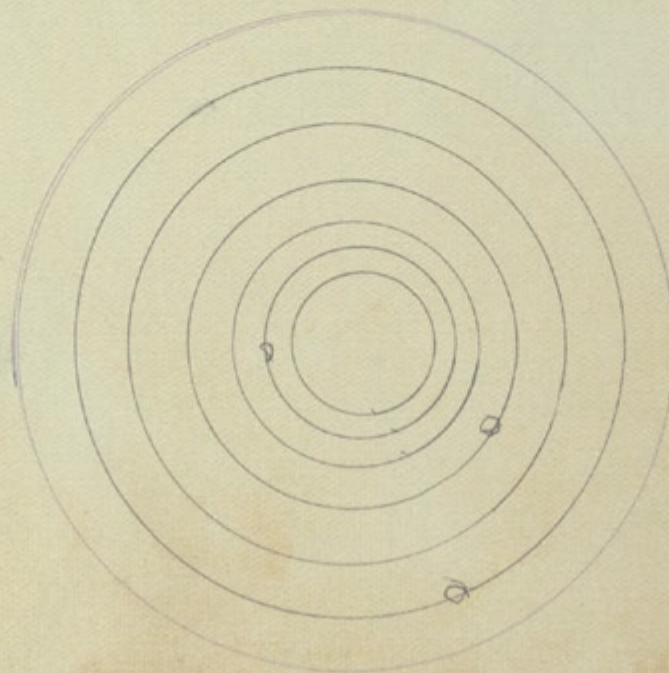
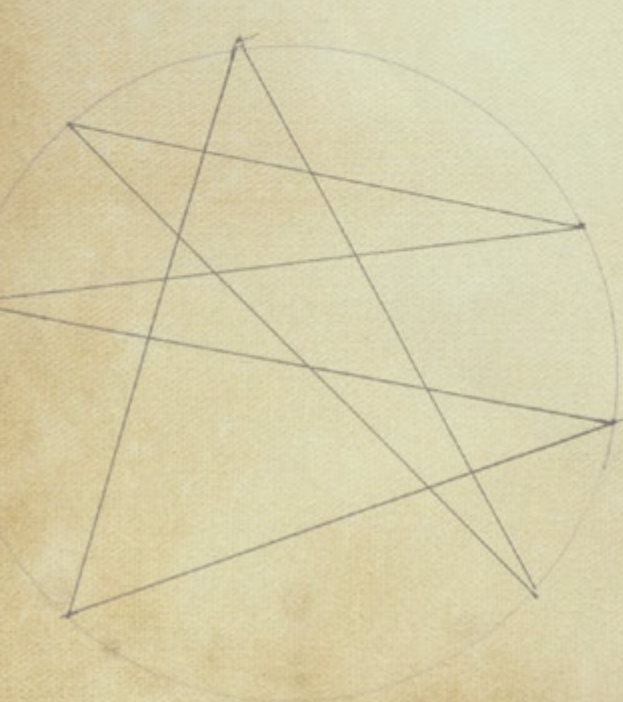


Fig. 1

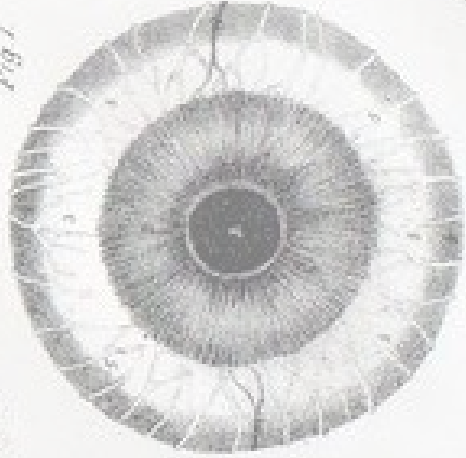


Fig. 2

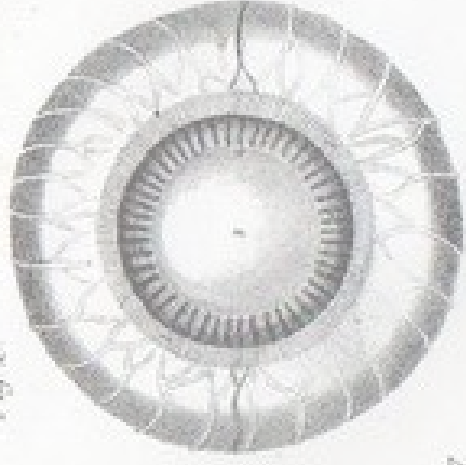


Fig. 11

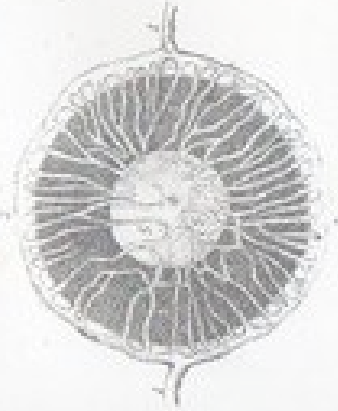


Fig. 12

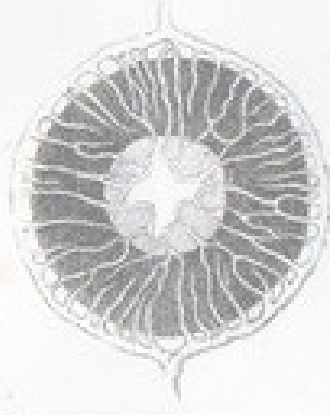


Fig. 8



Fig. 10



Fig. 3

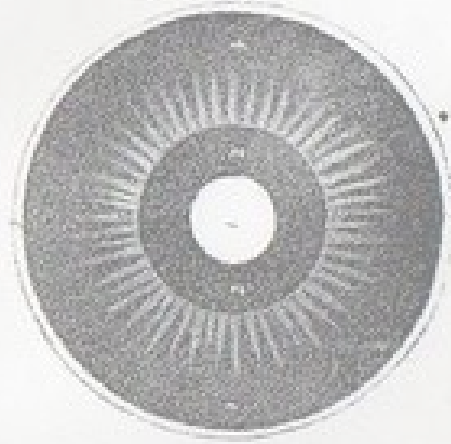
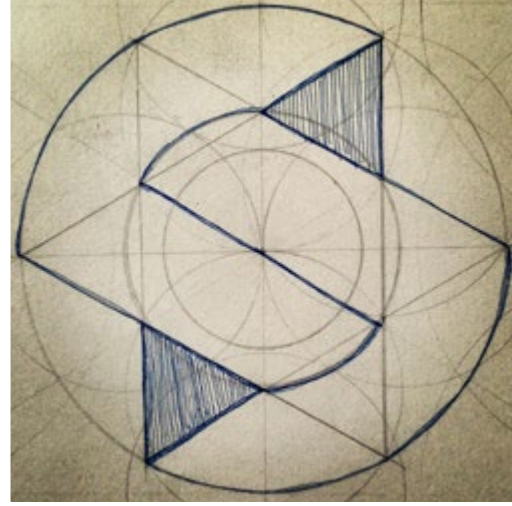
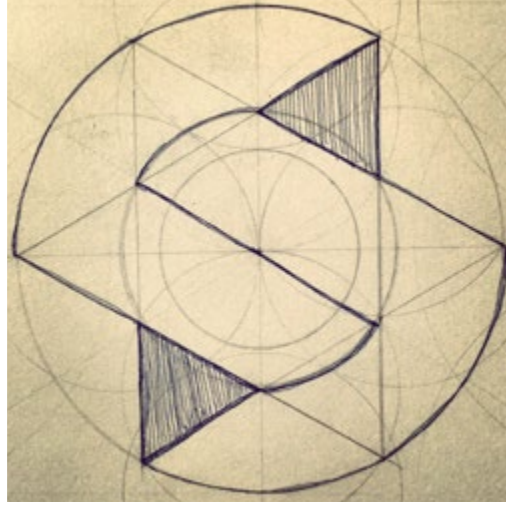
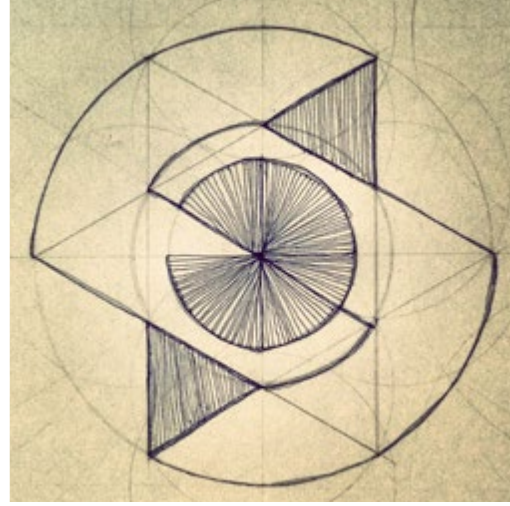
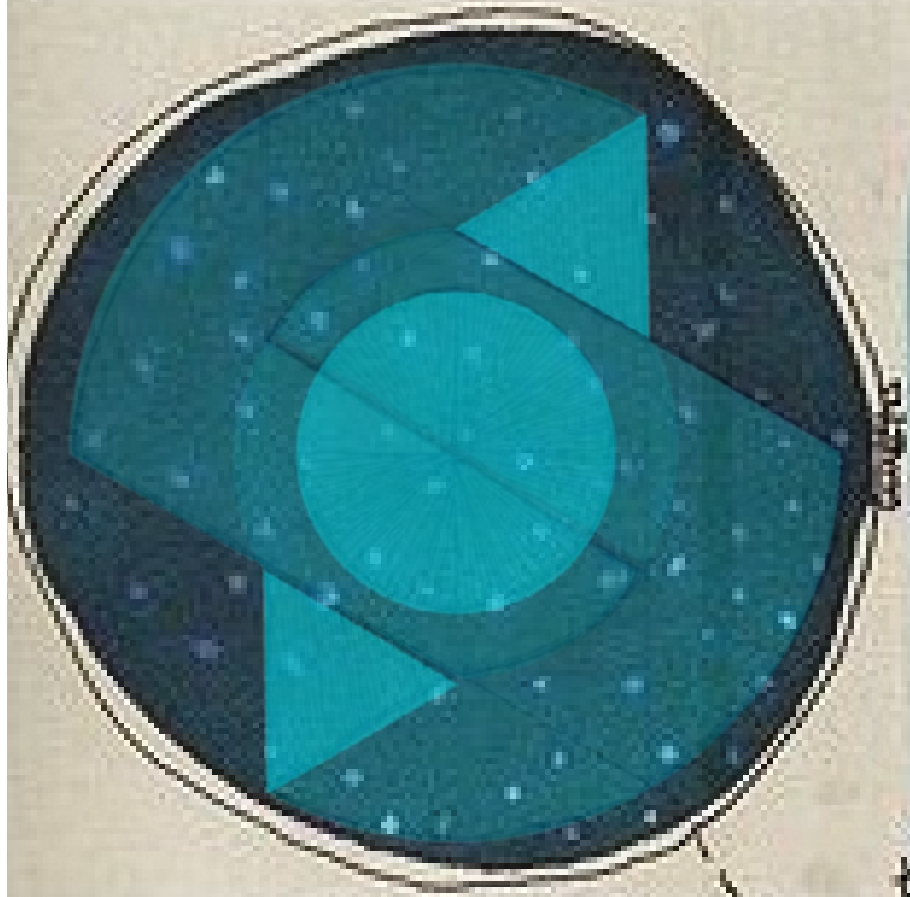


Fig. 4





center

the first star

the stream

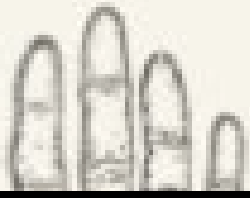




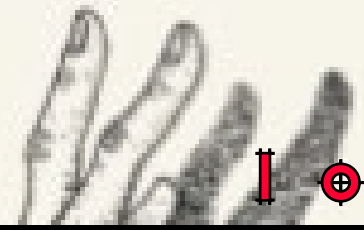
m a n i f e s t

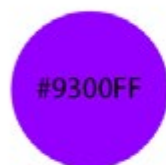
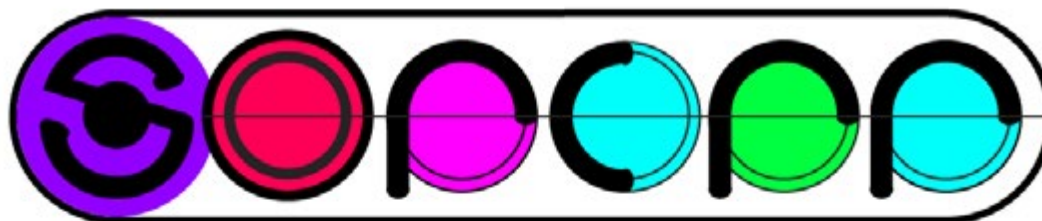


f i n a l

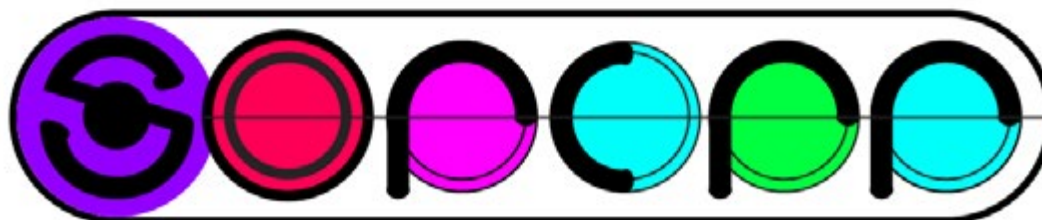


l o g o



H	273	299	338	177	134	H
S	100	100	100	100	100	S
B	100	100	100	100	100	B
R	147	255	255	147	0	R
G	0	0	0	255	255	G
B	255	255	85	251	64	B
C	58	14	0	82	94	C
M	81	78	94	0	0	M
Y	0	0	52	24	100	Y
K	0	0	0	0	0	K



f i n a l

l a y o u t

